

 <b>WHITE GOODS</b>	<b>DOUBLE DOOR 345 – 400</b>	<b>CUSTOMER SUPPORT</b>
	<b>ASSEMBLE &amp; DISASSEMBLE</b>	

**A- Changing The Door Swing Direction to Right Hand**

- 1- Unscrew the two screws which are fixing the bottom hinge. (Fig-1)      2- Remove the freezer door. (Fig-2)



**Figure-1**



**Figure-2**

- 3- Unscrew the two screws which are fixing the middle hinge. (Fig-3)

- 4- Remove the refrigerator door. (Fig-4)



**Figure-3**



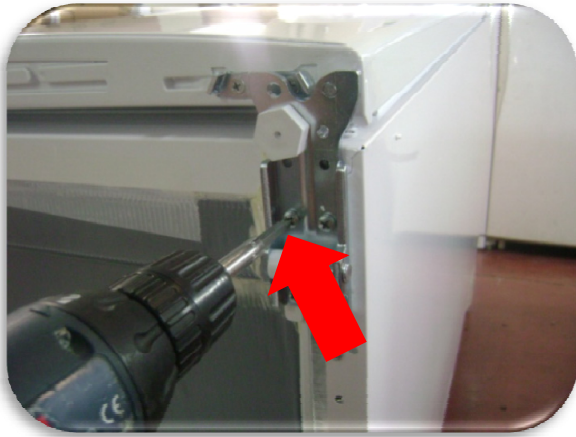
**Figure-4**

Figure-3

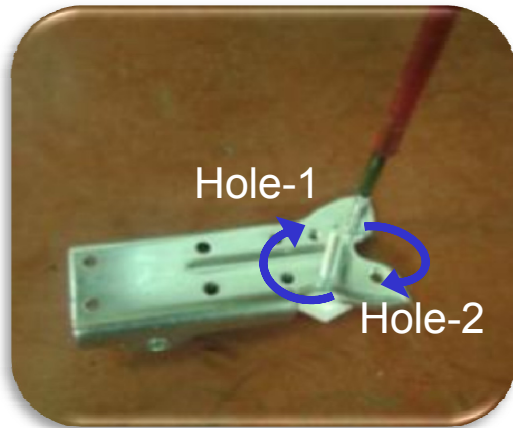
 <b>WHITE GOODS</b>	<b>DOUBLE DOOR 345 – 400</b>	<b>CUSTOMER SUPPORT</b>
	<b>ASSEMBLE &amp; DISASSEMBLE</b>	

5- Unscrew the bottom hinge fixing screws and remove it. (Fig-6)

6- Unscrew the stationary foot of bottom hinge and screw to Hole-1 Unscrew the hinge pin and screw the pin to Hole 2. (Fig-6)



**Figure-5**

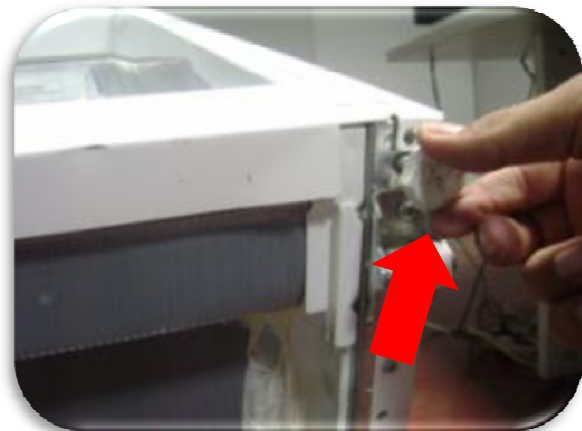


**Figure-6**

7- Unscrew the stationary foot and front wheel (Fig-7.1) and screw the right side. (Fig-7.2)



**Figure-7.1**



**Figure-7.2**

8- Screw the bottom hinge to the left side . (Fig-8)



**Figure-8**

 <b>WHITE GOODS</b>	<b>DOUBLE DOOR 345 – 400</b>	<b>CUSTOMER SUPPORT</b>
	<b>ASSEMBLE &amp; DISASSEMBLE</b>	

**9-** Remove the two big caps on the left. (Fig-9.1) Insert the two big caps to the right side. (Fig-9.2)



**Figure-9.1**

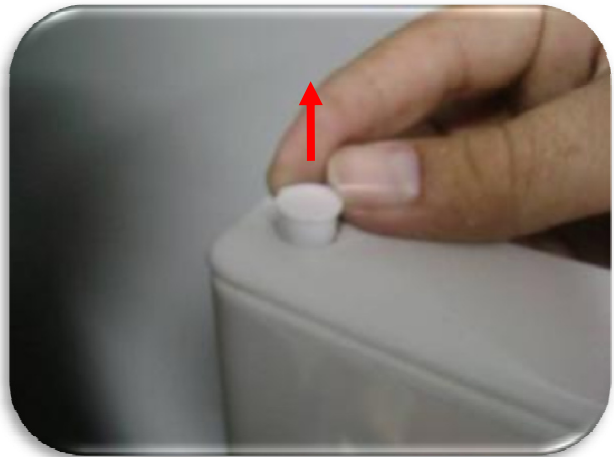


**Figure-9.2**

**10-** Replace the freezer door top bushing (Fig-10.1) and top bushing cap. (Fig-10.2)

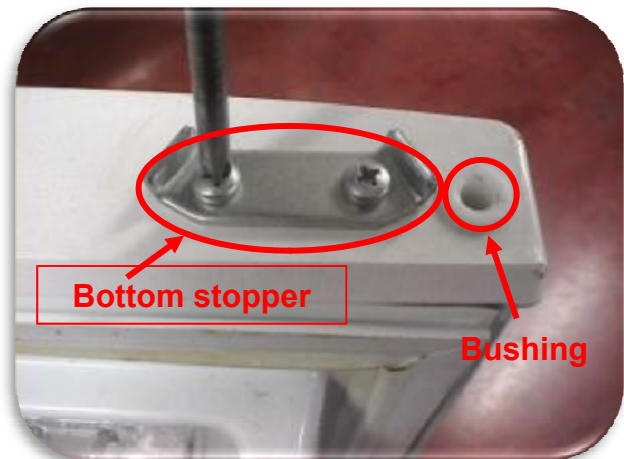


**Figure-10.1**



**Figure-10.2**

**11-** Remove the freezer door bottom bushing and bottom stopper and then insert them the left side. (Fig-11)



**Figure-11**

 <b>WHITE GOODS</b>	<b>DOUBLE DOOR 345 – 400</b>	<b>CUSTOMER SUPPORT</b>
	<b>ASSEMBLE &amp; DISASSEMBLE</b>	

**12.** Assemble the refrigerator door. Turn the middle hinge by 180°. Fix the middle hinge by tightening the screws. (Fig-12.1) Assemble the freezer door. (Fig-12.2)

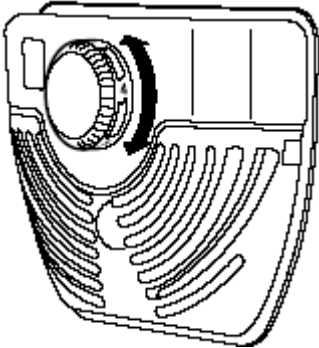


**Figure-12.1**



**Figure-12.2**

### **B - Changing The Thermostat :**



- 1) Remove the lamp cover and unscrew the fixing screw.
- 2) Remove the thermostat box by pulling it and disconnecting the cable terminals.
- 3) Remove the thermostat knob by pulling forward. Loosen the nut which is fixing the thermostat.
- 4) Pull out the thermostat bulb from the housing.
- 5) Replace the thermostat with the new one and assemble the thermostat box following the steps backwards.

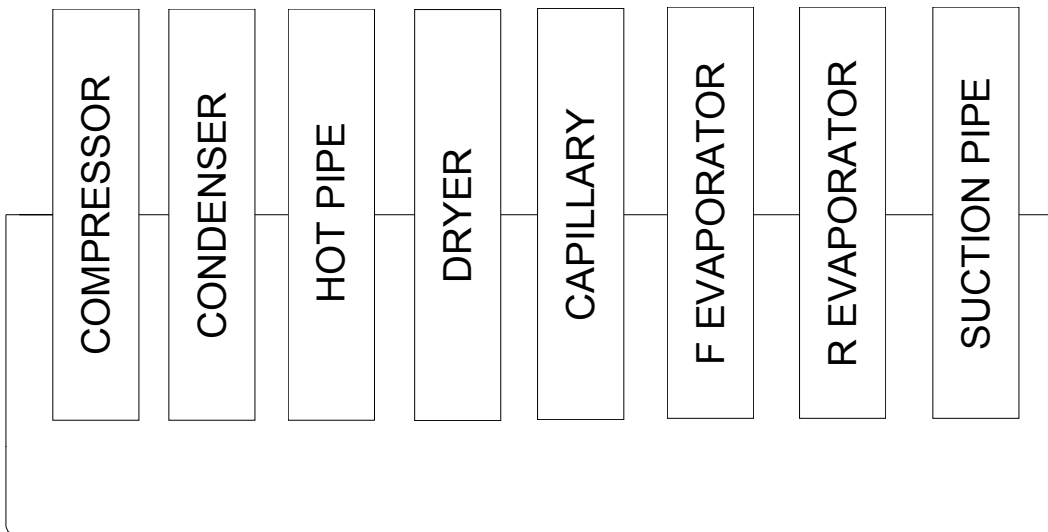
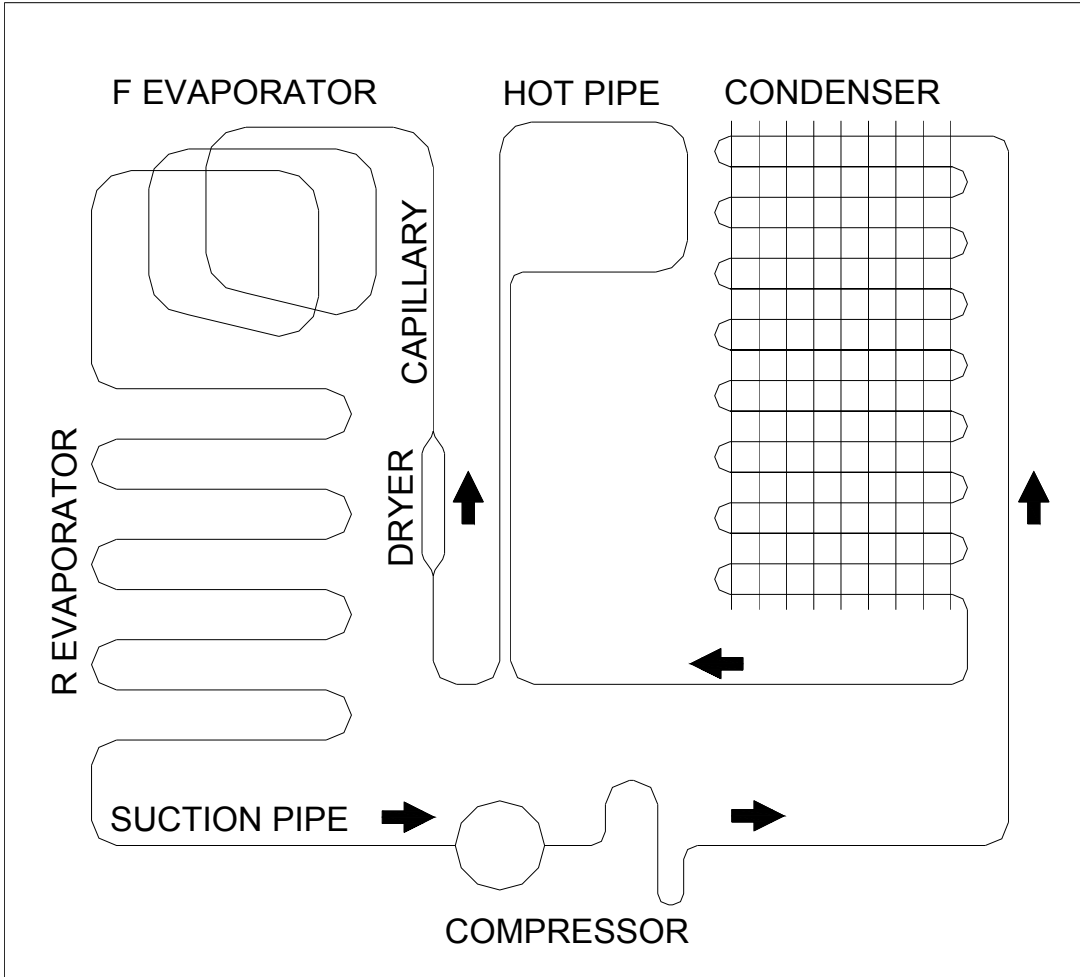
### **C - Thermostat Knob**

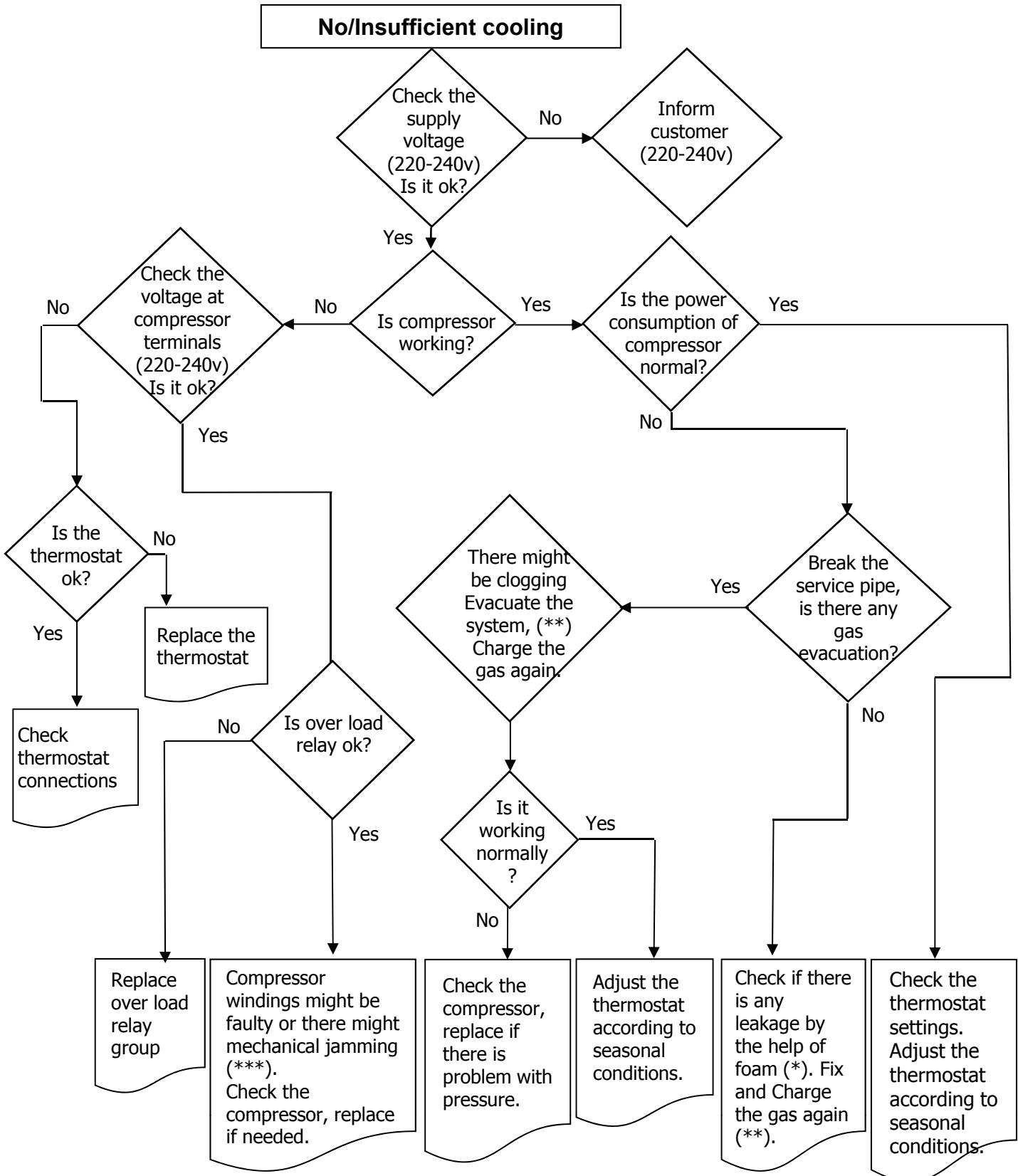
- Thermostat automatically regulates the inside temperature of the refrigerator compartment and freezer compartment. By rotating the knob from position 1 to 5, colder temperatures can be obtained. “ . ” position shows thermostat is closed and no cooling will be available.
  - For short-term storage of food in the freezer compartment, you can set the knob between 1 and 3 position.
  - For long-term storage of food in the freezer compartment, you can set knob 3-4 position.
- Note that** ; the ambient temperature, temperature of the freshly stored food and how often the door is opened, affects the temperature in the refrigerator compartment. If required, change the temperature setting.

**Important note:** Do not try to rotate knob beyond 1 position it will stop your appliance.

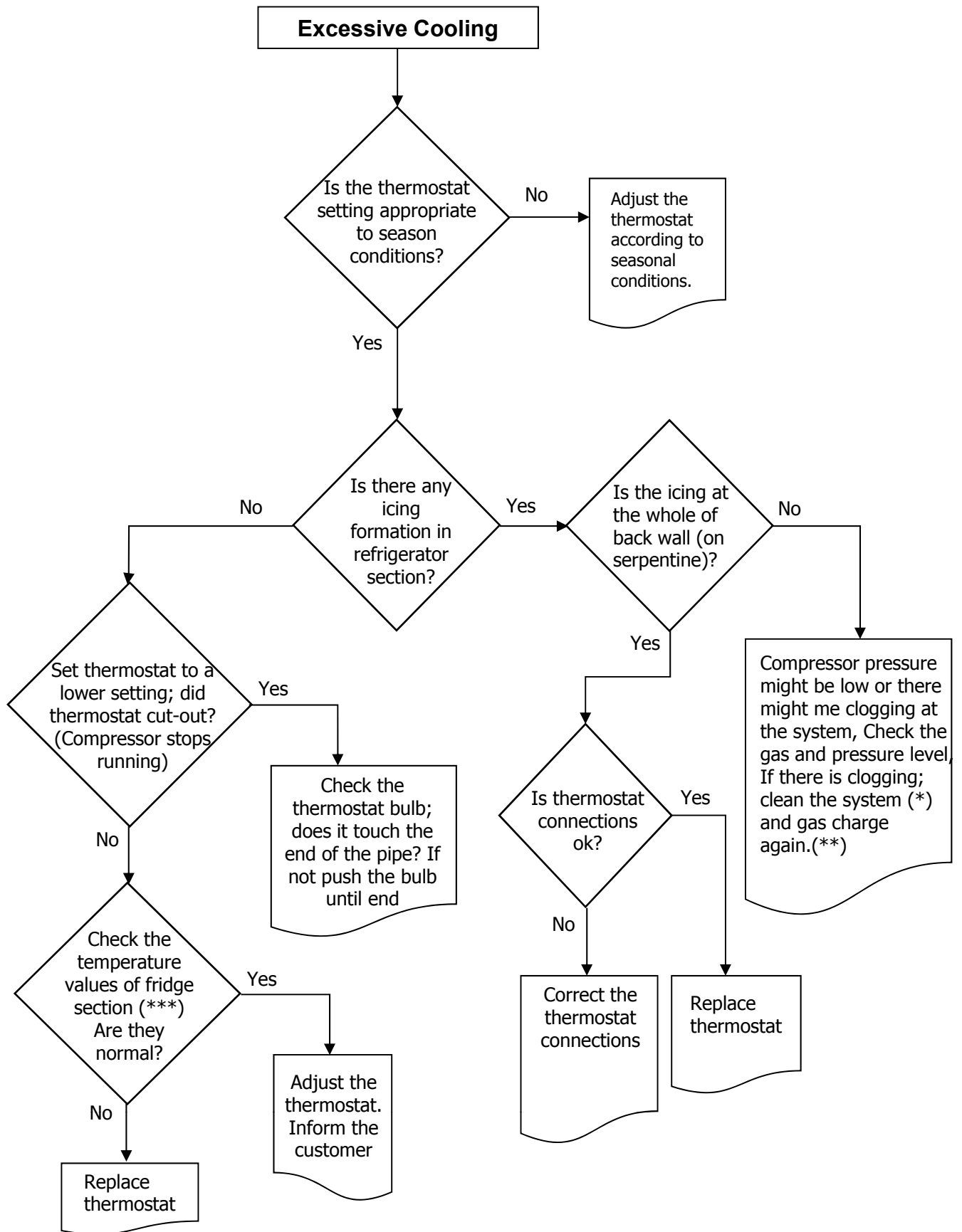
**Figure-11**

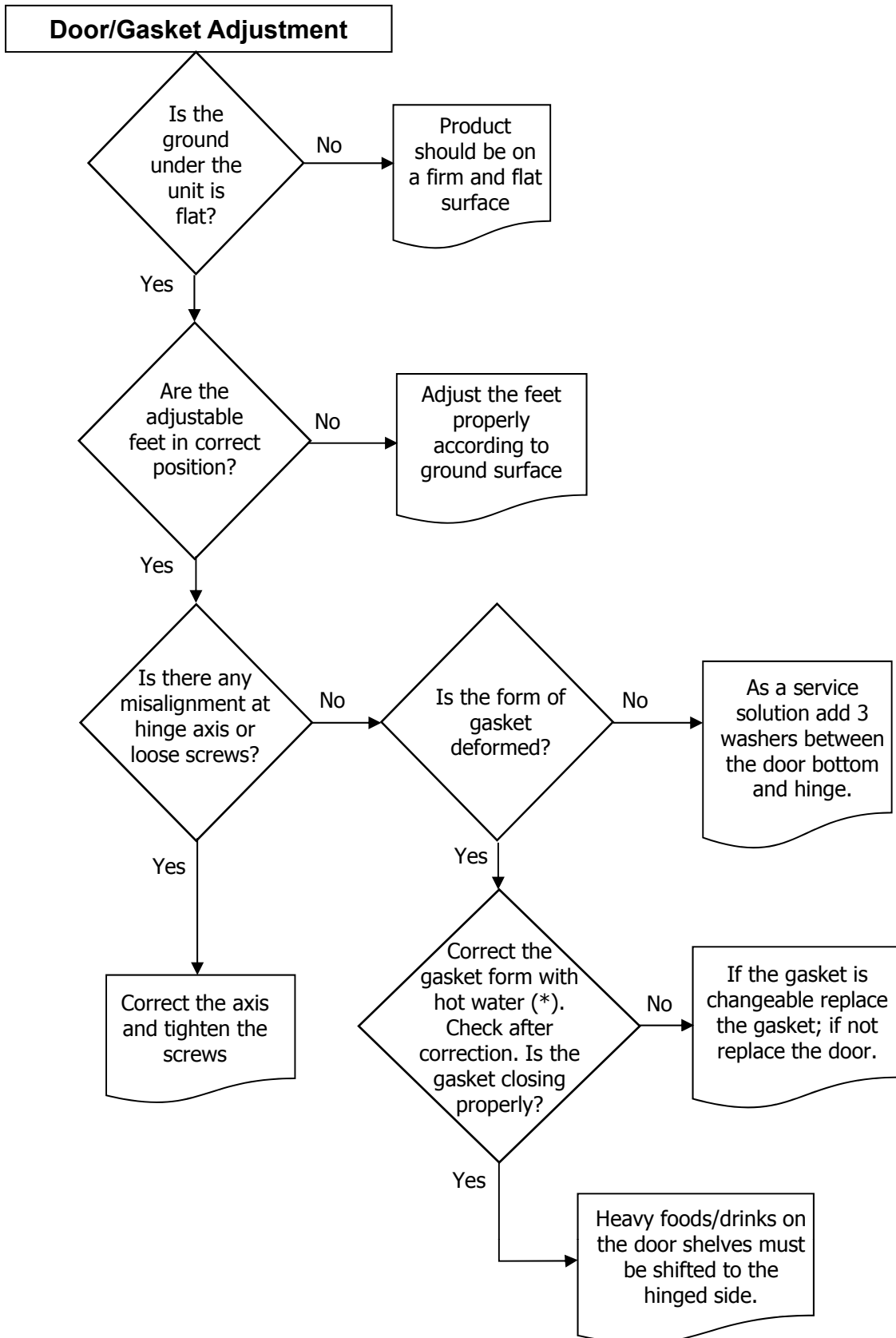
 <b>WHITE GOODS</b>	<b>DOUBLE DOOR 345 – 400</b>	<b>CUSTOMER SUPPORT</b>
	<b>REFRIGERANT CYCLE DIAGRAM</b>	





(\*) Check all pipes, tubes and welding points against gas leakage. (\*\*) Before charging gas to system, change dryer and vacuum at least 30 minutes, then charge the system with amount written on label (\*\*\*) Compressor primary winding should be around 10 Ω and secondary around 15 Ω (at 25°C ambience temp.)





(\*). Correct the gasket form by the help of hot water and hair dryer.

